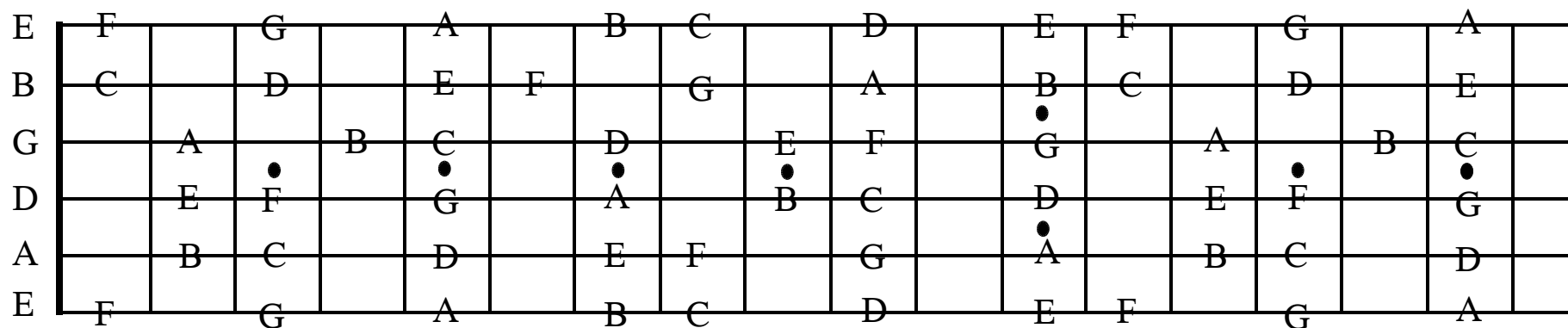
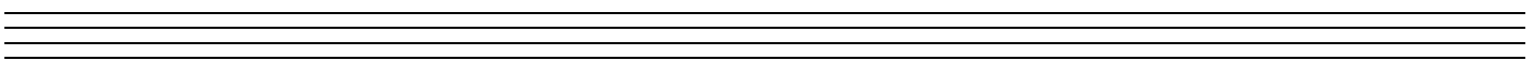
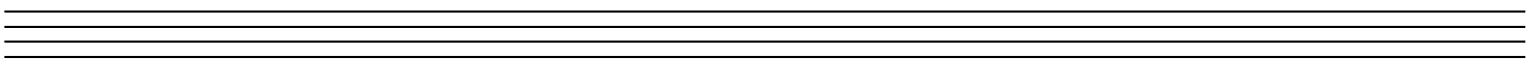
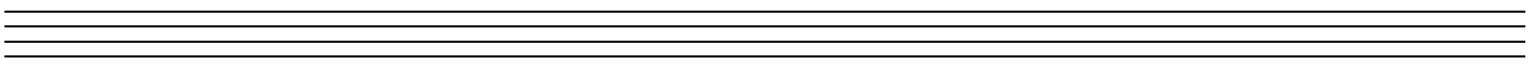
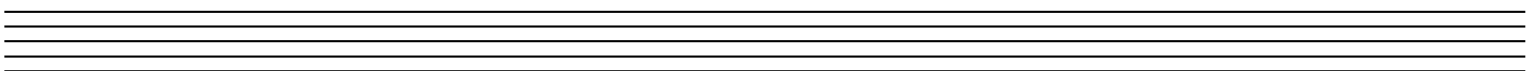
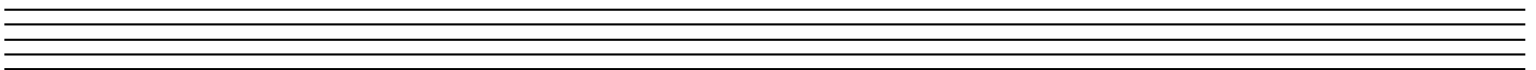
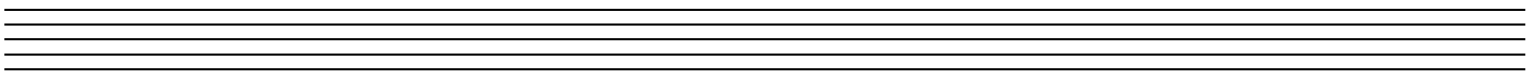
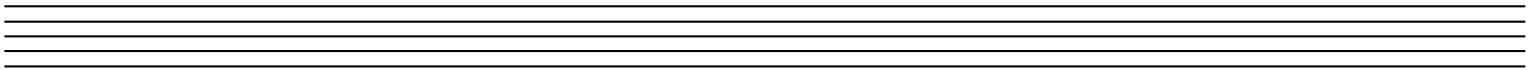
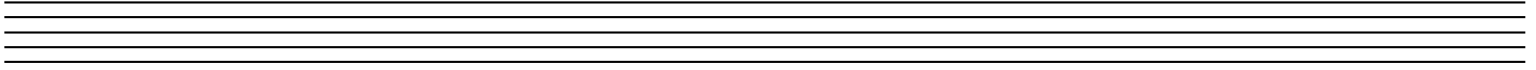
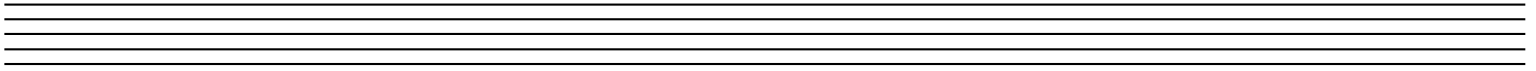


The guitar neck





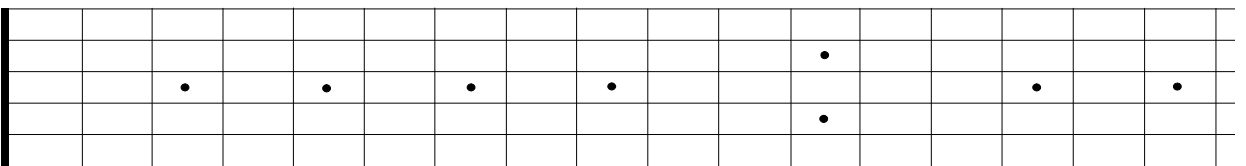
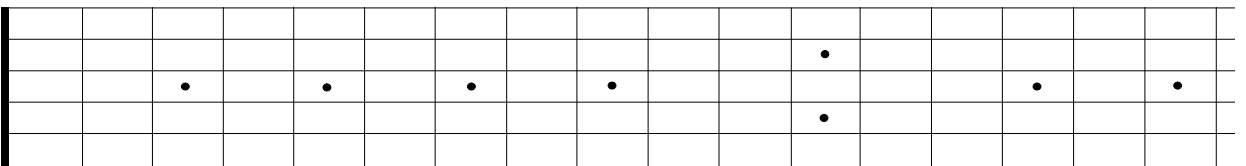
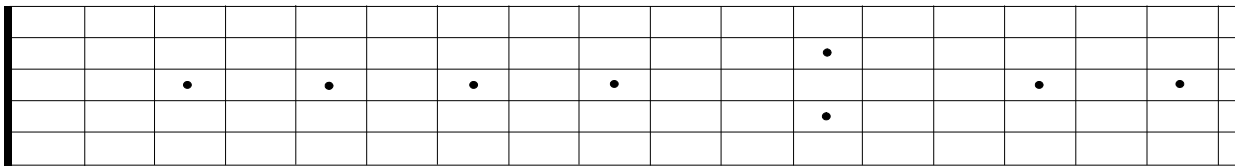
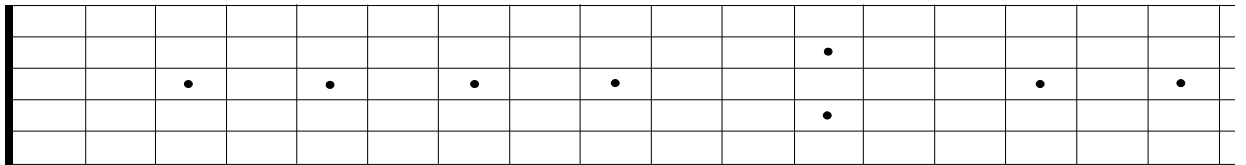
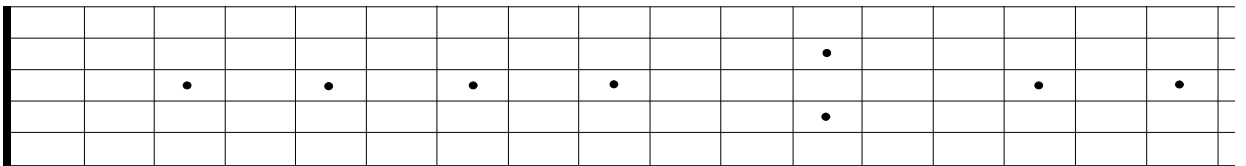
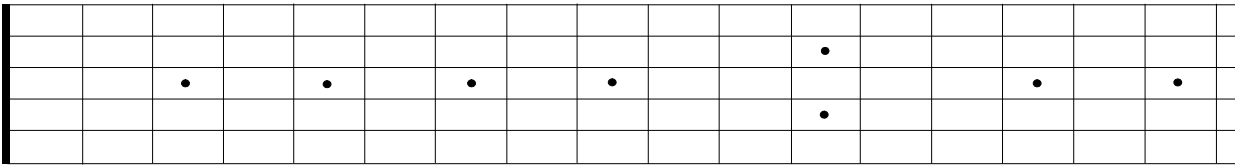
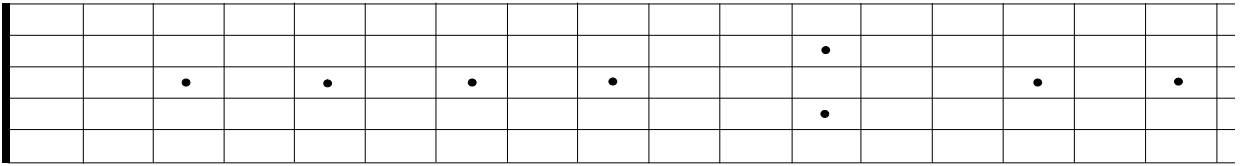
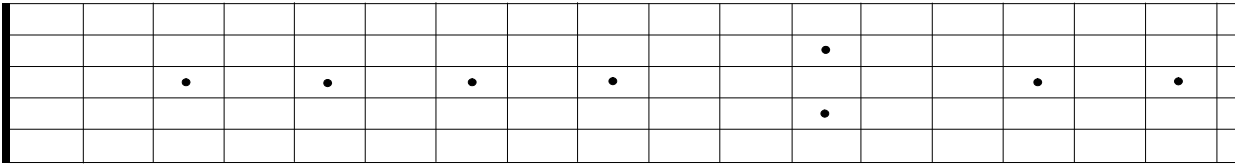
A musical staff system consisting of two staves. The top staff has a treble clef, and the bottom staff has a bass clef. Both staves are empty.

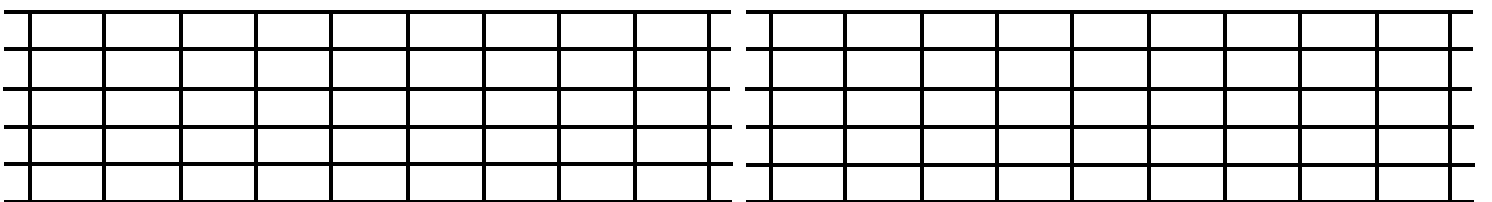
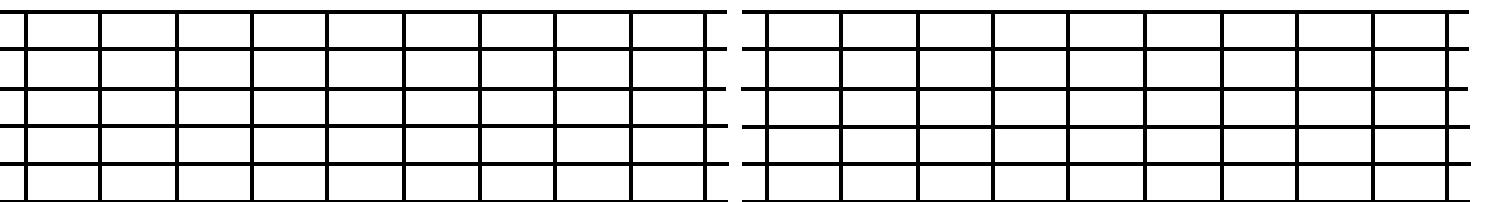
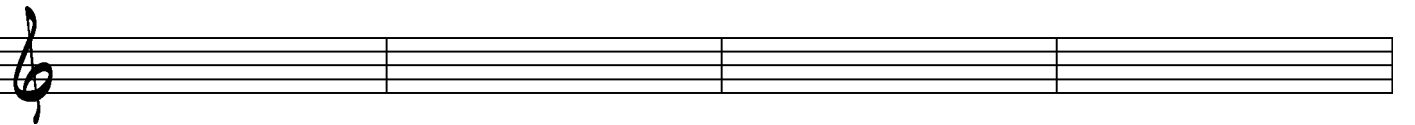
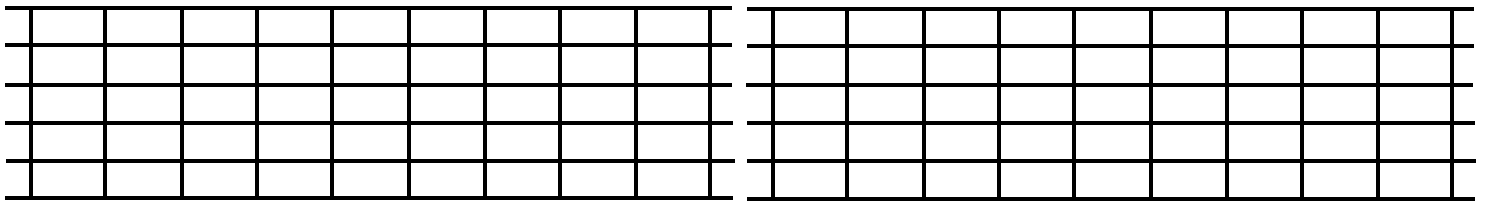
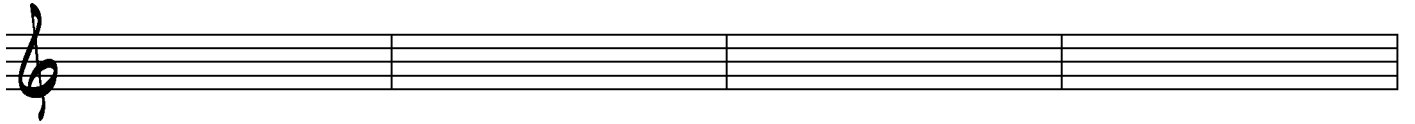
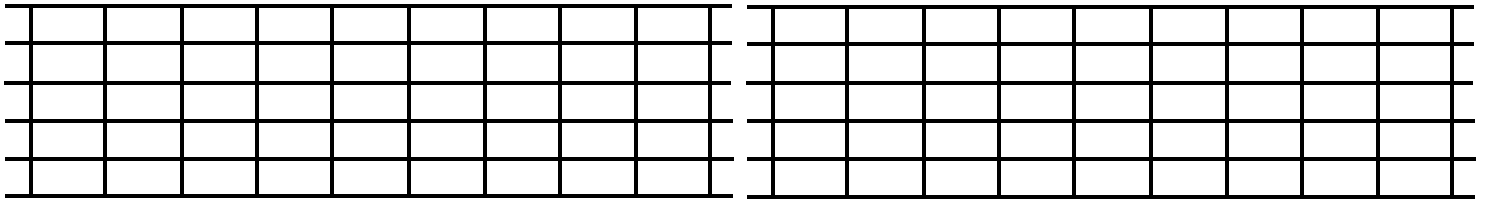
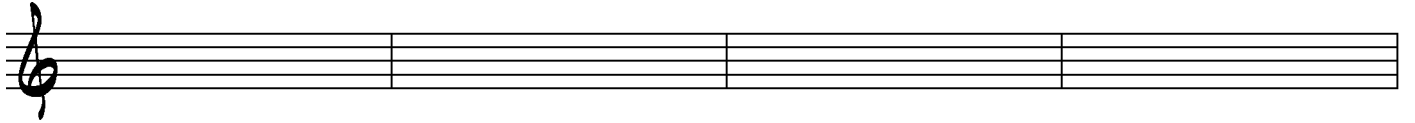
A musical staff system consisting of two staves. The top staff has a treble clef, and the bottom staff has a bass clef. Both staves are empty.

A musical staff system consisting of two staves. The top staff has a treble clef, and the bottom staff has a bass clef. Both staves are empty.

A musical staff system consisting of two staves. The top staff has a treble clef, and the bottom staff has a bass clef. Both staves are empty.

A musical staff system consisting of two staves. The top staff has a treble clef, and the bottom staff has a bass clef. Both staves are empty.





Musical notation system 1: Treble clef staff and TAB staff.

Empty grid system 1: Two sets of 3x8 grids.

Musical notation system 2: Treble clef staff and TAB staff.

Empty grid system 2: Two sets of 3x8 grids.

Musical notation system 3: Treble clef staff and TAB staff.

Empty grid system 3: Two sets of 3x8 grids.