

LEVEL I

Sample Test Questions and Responses

I. Scales

1) Major: Two octaves from any degree or mode (sixteenth notes at $\text{♩} = 60$).

Ex. 1 G from 2nd degree



Ex. 2 D Locrian



2) Chromatic: Two octaves from tonic (sixteenth notes at $\text{♩} = 60$).

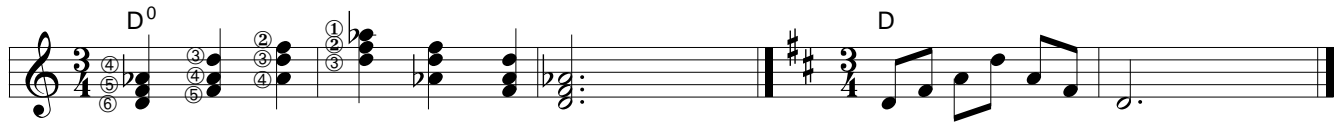
A Chromatic



II. Triads

Chords: Maj., Min., Aug., Dim., close voicing starting from root position, across fingerboard one octave.

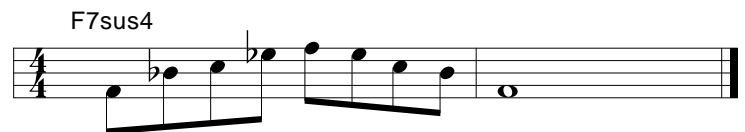
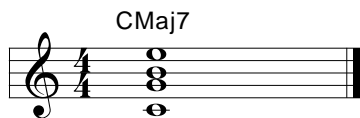
Arpeggios: Maj., Min., Aug., Dim. one octave from root (eighth notes at $\text{♩} = 60$).



III. Four Part

Chords: Maj7, Min7, Dom7, Min7b5, Dom7sus4, 7#5, Dim7, Maj6, Min6, Min9, 9, 7b9, 7#9, 13—one form for each.

Arpeggios: Maj7, Min7, Dom7, Min7b5, Dom7sus4, 7#5, Dim7 one octave from root (eighth notes at $\text{♩} = 60$).



IV. Performance

1. Performance: Instructor approved performance piece—three minute maximum. Notation required for test team.
2. Reading: Level appropriate—single note and chords with rhythm slashes.