

LEVEL III

Sample Test Questions and Responses

I. Scales

1) Harmonic Minor: Two octaves from any degree (sixteenth notes at $\text{♩}=60$).

Ex. 1 D from 5th degree



Ex. 2 C from 7th degree



2) Diminished (whole step, half step): Two octaves from tonic (sixteenth notes at $\text{♩}=60$).

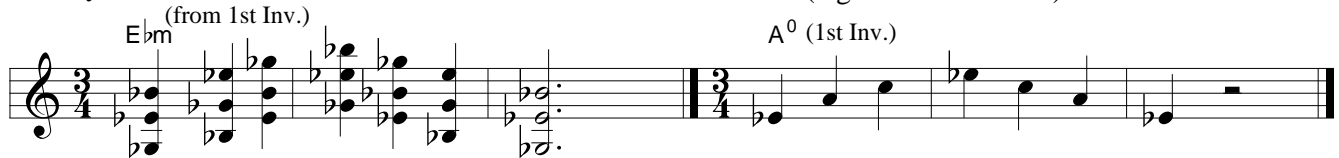
G Diminished



II. Triads

Maj., Min. spread (open) voicings, starting from any inversion, one octave.

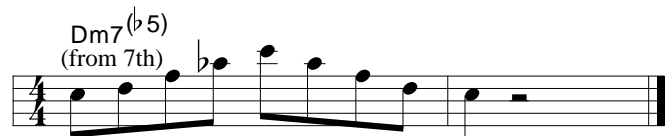
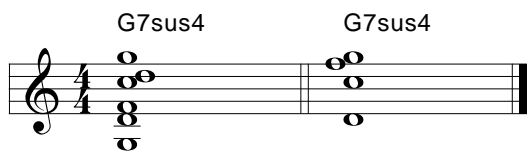
Maj., Min., Aug., Dim. from any chord tone, one octave (eighth notes at $\text{♩}=60$).



III. Four Part

Chords: Maj7, Min7, Dom7, Min7b5, Dom7sus4, 7#5, Dim7, Maj6, Min6, Min9, 9, 7b9, 7#9, 13—two forms for each

Arpeggios: Maj7, Min7, Dom7, Min7b5, Dom7sus4, 7#5, Dim7 from any chord tone, one octave (eighth notes at $\text{♩}=60$).



IV. Performance

1. Performance: Instructor approved performance piece—three minute maximum. Notation required for test team.
2. Reading: Level appropriate—single note and chords with rhythm slashes.